



'Head of a Lotus Eater'



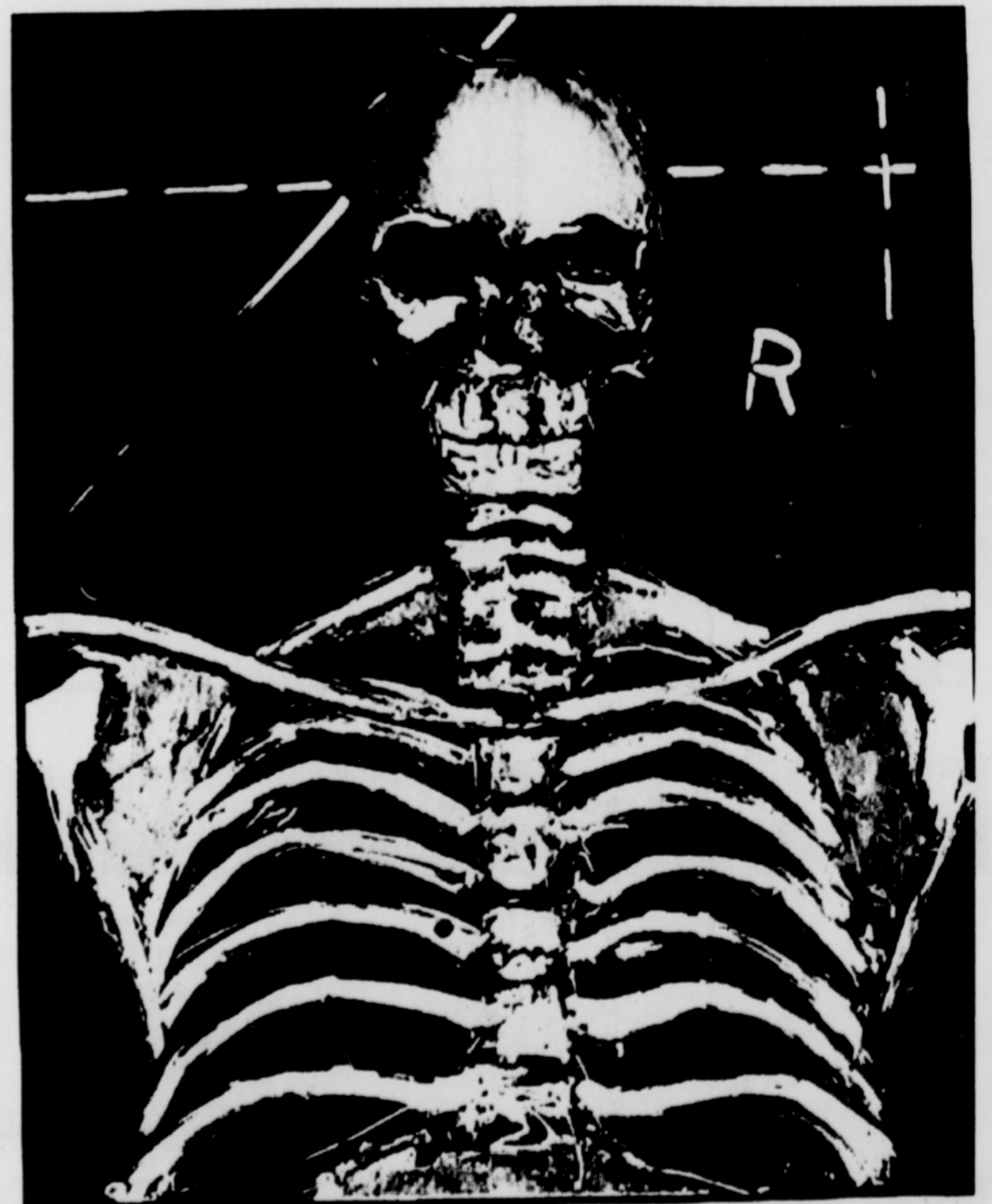
'Half King'

ASTORIA ARTIST JOHN R. CLARK

The images I draw are explorations of self, pulled from random marks on paper or metal that are assembled to form an image. Although a preconceived notion of the subject I am drawing exists at the start of the process, I never have any idea of what the final outcome will be. By building the drawing up then deconstructing it I arrive at an image that is much richer and full of information that was not intentional. The subject matter I draw is always the human figure, focusing on the head as a portrait of some sort. Some of my subjects are known personalities, others are fabrications comprised of the features of many faces. My goal is to create a strong image that invites the viewer to look into the face of humanity, and perhaps into the depths of one's self.



'Witness'



'X Ray'